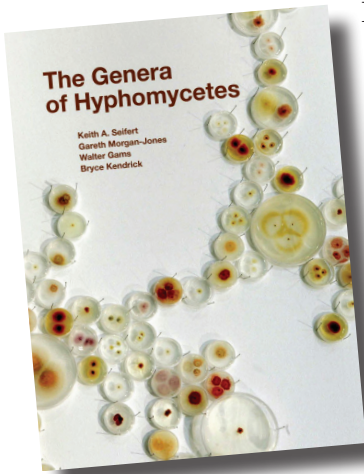


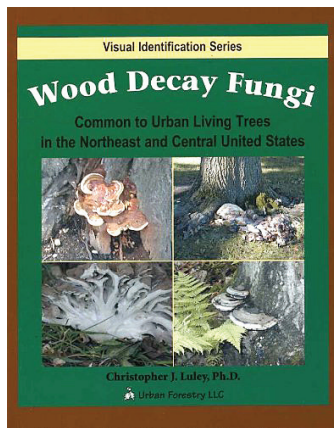
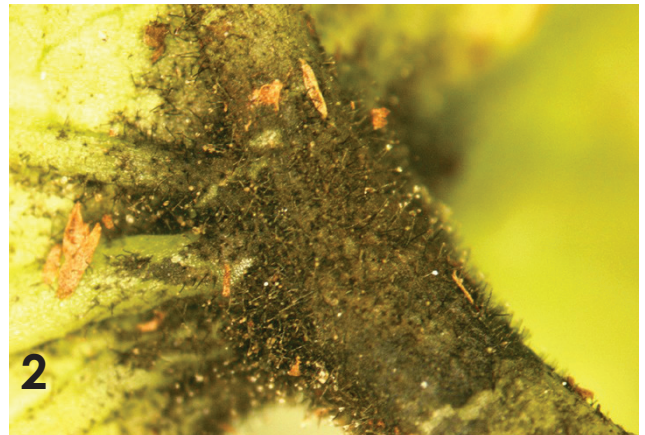
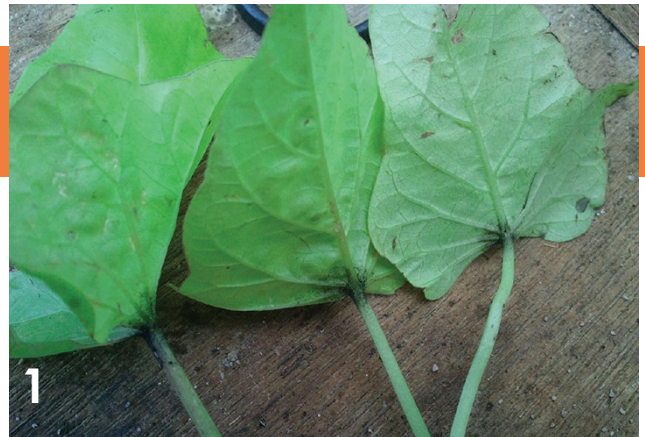
TIP OF THE MONTH

Useful Literature References



For identification of fungi that form synnemata, including some of the sooty mold fungi, try Seifert & Okada's key to synnematos hyphomycete genera in the 2011 book "The Genera of Hyphomycetes". A black fungus observed growing at the bases of leaf blades and tops of petioles of greenhouse-grown ornamental sweetpotato leaves submitted to a diagnostic lab (figures 1, 2, 3) was identified using this reference and also matched the

generic description of a sooty mold identified as genus *Leptoxyphium* on pp.777-782 of Hughes' 1976 paper on sooty molds (*Mycologia* 68 (4):693-820).



A good visual resource for identification of wood rotters is "Wood Decay Fungi Common to Urban Living Trees in the Northeast and Central United States" by Christopher J. Luley ISBN 0-9767129-1-1. 🌿

ASIAN LONGHORNED BEETLE ERADICATED IN NEW JERSEY!

On March 14, APHIS declared eradication of the Asian longhorned beetle (ALB) in Middlesex and Union Counties, NJ, thereby releasing them from quarantine. Since 2004, APHIS has worked with its State partners to complete extensive survey, control and regulatory activities in these areas to eradicate ALB from New Jersey.

APHIS determined that these counties can be removed from quarantine after program efforts resulted in three years of negative surveys of host plants within the regulated areas. There are no remaining ALB regulated areas in New Jersey. Read the [official announcement here](#).

